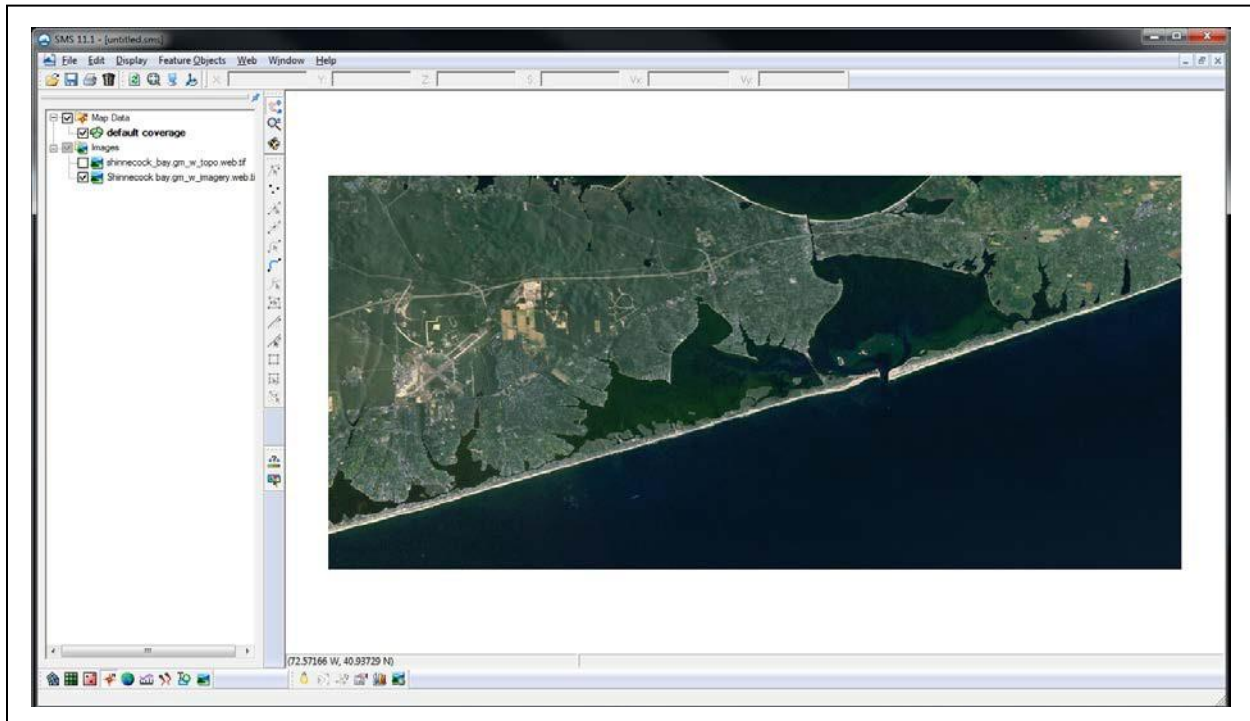


SMS 12.3 Tutorial

Import from Web



Objectives

This tutorial gives an overview of the *Importing from Web* option offered by SMS. This option connects SMS to a web based program that adds additional functionality to the SMS program. The two programs interact through an internet connection and allow accessing satellite photographs easily and quickly.

This tutorial will review the basic skills concerning how to use the *Import From Web* option.

Prerequisites

- None

Requirements

- Internet connection

Time

- 15–30 minutes

1	Introduction.....	2
2	Importing a TerraServer Aerial Photo.....	2
2.1	Selecting the Location of the Aerial Photo	2
2.2	Saving the Image.....	3
3	Importing a World Topographic Image.....	4
3.1	Selecting the Location for the Topographic Image	4
3.2	Saving the Image.....	5
4	Conclusion	6

1 Introduction

The Import from Web option adds an easier way to obtain images from the internet to use as backgrounds for SMS projects. SMS is able to connect to TerraServer and can retrieve selected photographs or maps of just about any location desired. Two specific file types can be obtained through using this option:

- Aerial photo
- World topographical map

2 Importing a TerraServer Aerial Photo

A TerraServer aerial photo can be imported into SMS and saved as a background image for a project.

2.1 Selecting the Location of the Aerial Photo

To open the project in SMS, do the following:

1. Select *File* | **Delete All** to clear all previous data.
2. If asked to confirm deletion of all data, click **Yes**.
3. Select *Web* | **Import from Web...** to bring up the *Virtual Earth Map Locator* dialog.

For this tutorial, use the following location: Shinnecock Bay, Long Island, NY.

4. Enter “Shinnecock Bay” in the *Place to search for* field and click **Jump to Search Location**.
5. Switch to **Aerial** view by using the drop-down menu in the upper right corner.
6. Using the same dropdown menu. turn off **Labels**.
7. Drag the image to center the bay in the window.
8. Zoom in to a comfortable view where the entire bay fits the screen nicely (Figure 1).

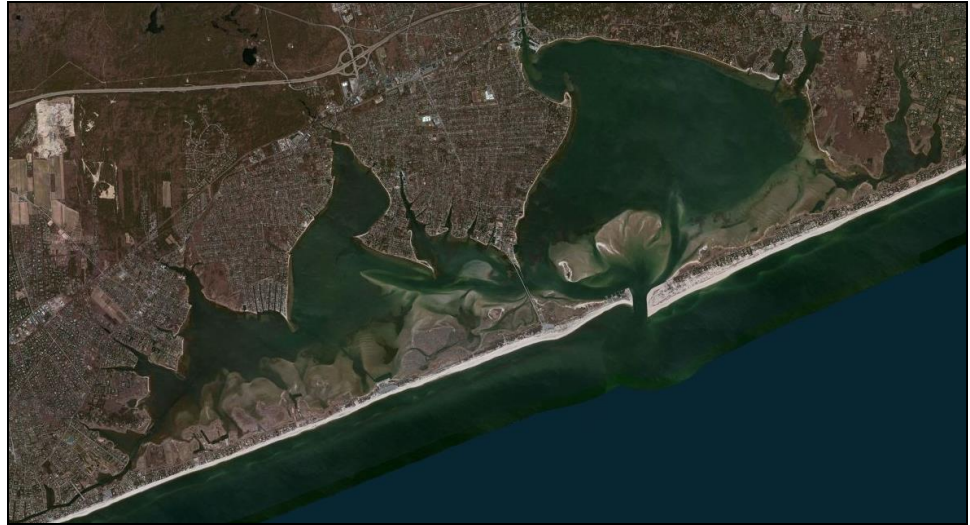


Figure 1 Shinnecock Bay

9. Click **OK** button to close the *Virtual Earth Map Locator* dialog and bring up the *Data Service Options* dialog.

SMS then takes the last image that was in the dialog and allows for saving it in a few ways.

2.2 Saving the Image

In the *Data Service Options* dialog, there are five file options (scroll right to view all of them).

1. Select *World Imagery* and click **OK** to close the *Data Service Options* dialog and open the *Save Web Services Data File(s)* dialog.
2. Select “Web Services Files (*.web)” from the *Save as type* drop-down.
3. Browse to the desired location to save the file and enter “shinnecock_bay” as the *File name*.
4. Click **Save** to import the image into SMS, close the *Save Web Services Data File(s)* dialog, and open the *Select Projection* dialog.
5. When asked to confirm the creation of the file, click **Yes**.

This dialog shows the complete path of the file and shows the extension of the file. Since this file is an aerial file, it ends with “*_imagery.web.tif”. Other image types have unique file extensions to help in differentiation.

6. When advised that projection must be set, click **OK**.
7. Click **OK** to accept the default geographic projection settings, close the *Select Projection* dialog, and bring up the *Display Projection* dialog.

8. Click **OK** to accept the default settings, close the *Display Projection* dialog, and bring up the *Image Pixel Scale* dialog.

A suggested scale is already provided, but a different scale can be selected if desired. Remember that the lower the scale the more detailed the image and the more time it will take to save.

9. Click **OK** to accept the default size and exit the *Image Pixel Size* dialog.

SMS then creates the file and loads the image into the Graphics Window.

3 Importing a World Topographic Image

A world topographic image can be imported into SMS and saved to serve as a background for a project.

3.1 Selecting the Location for the Topographic Image

To open a new project in SMS, do the following:

1. Select *File* | **Delete All** to clear all previous data.
2. If asked to confirm deletion of all data, click **Yes**.
3. Select *Web* | **Import from Web...** to bring up the *Virtual Earth Map Locator* dialog.
4. Enter “Shinnecock Bay” in the *Place to search for* field and click **Jump to Search Location**.
5. Drag the image to center the bay in the window.
6. Zoom in to a comfortable view where the entire bay fits the screen nicely (Figure 2).
7. Click **OK** button to close the *Virtual Earth Map Locator* dialog and bring up the *Data Service Options* dialog.

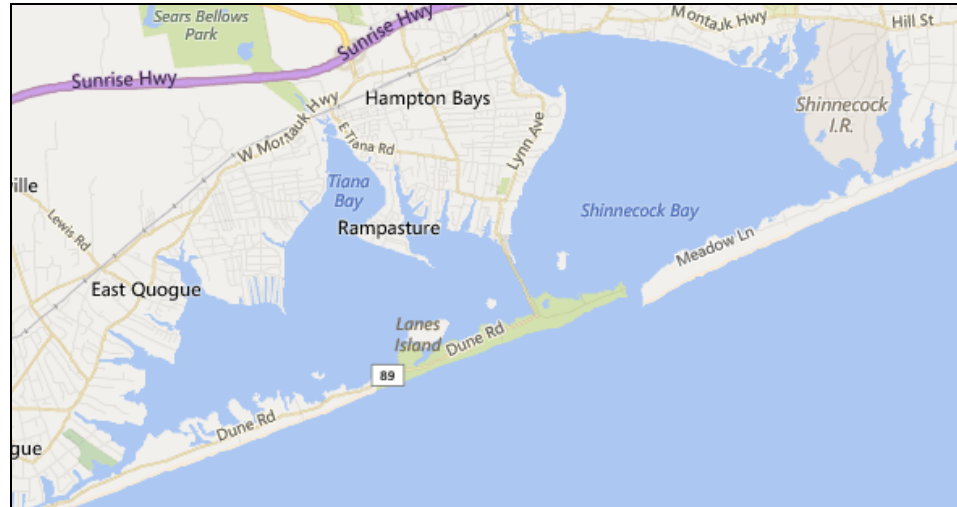


Figure 2 Shinnecock Bay

3.2 Saving the Image

1. Scroll to the right to select *World Topo Map* and click **OK** to close the *Data Service Options* dialog and bring up the *Save Web Services Data File(s)* dialog.
2. Select “Web Services Files (*.web)” from the *Save as type* drop-down.
3. Browse to the desired location to save the file and enter “shinnecock_bay_topo” as the *File name*.
4. Click **Save** to import the image into SMS, close the *Save Web Services Data File(s)* dialog, and open the *Select Projection* dialog.
5. When asked to confirm the creation of the file, click **Yes**.

This dialog shows the complete path of the file and shows the extension of the file. Since this file is an aerial file, it ends with “*_topo.web.tif”. Other image types have unique file extensions to help in differentiation.

6. When advised that projection must be set, click **OK**.
7. Click **OK** to accept the default geographic projection settings, close the *Select Projection* dialog, and bring up the *Display Projection* dialog.
8. Click **OK** to accept the default settings, close the *Display Projection* dialog, and bring up the *Image Pixel Scale* dialog.
9. Click **OK** to accept the default size and exit the *Image Pixel Size* dialog.

SMS then creates the file and loads the image into the Graphics Window.

4 Conclusion

This concludes the “Import from Web” tutorial. Feel free to continue to experimenting with this part of SMS, or exit the program.